

Hughes Terminal Setup Procedure:

STEP 1: Connect Ethernet cable to terminal.



STEP 2: Place the Hughes terminal in angular position with the top face in Southwest direction.



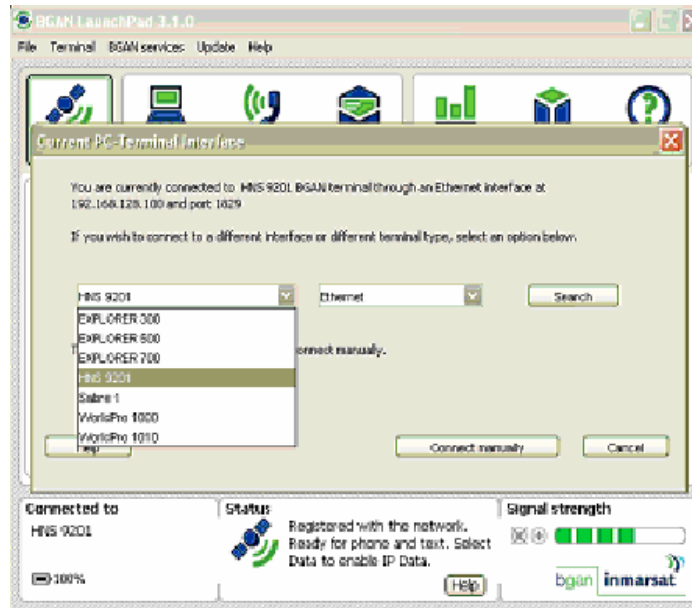
STEP 3: Turn on the terminal and wait until the GPS L.E.D goes green solid.

STEP 4: Now connect the Ethernet cable to laptop.

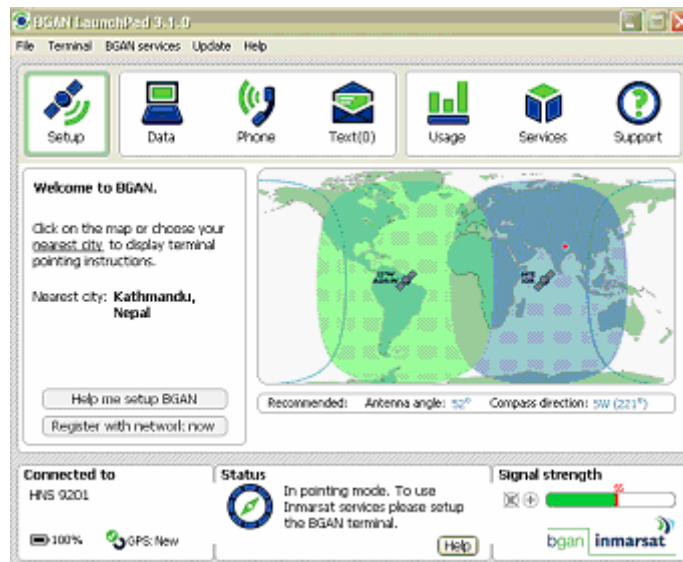


STEP 5: Start BGAN Lunchpad application.

STEP 6: Lunchpad will try to detect the terminal automatically, if it tells you that no BGAN Terminal is found, then select terminal type (i.e. HNS 9201) from list and select connecting media type (i.e. Ethernet) then click search.

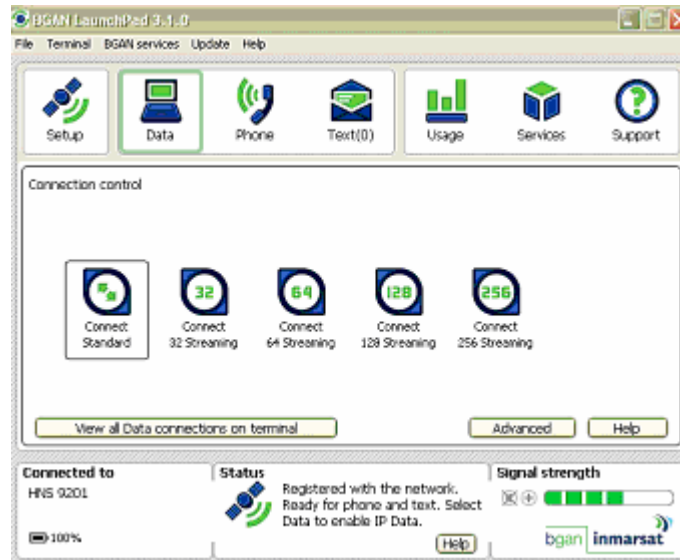


STEP 7: When Hughes Terminal is detected click register to network now.



STEP 8: When it is registered to network it should show GPS New, now you are ready to use ISDN phone.

STEP 9: Then click on data and click on Connect Standard, now in a few seconds it will connect you to IP data mode, after this you can use the Internet.



DNS Troubleshooting:

1. If you are not able to browse the Internet check to see if your DNS IP Address is **212.165.120.212** and Alternative DNS IP Address is **213.165.120.213**.
2. In the LAN Connection Properties open Internet Protocol (TCP/IP) Properties.
3. Under General Click To obtain an IP address automatically and set DNS IP Address as **212.165.120.212** and Alternative DNS IP Address as **213.165.120.213**.
4. Then turn off the terminal
5. Now follow the above-mentioned Setup Procedure from **STEP 3**.